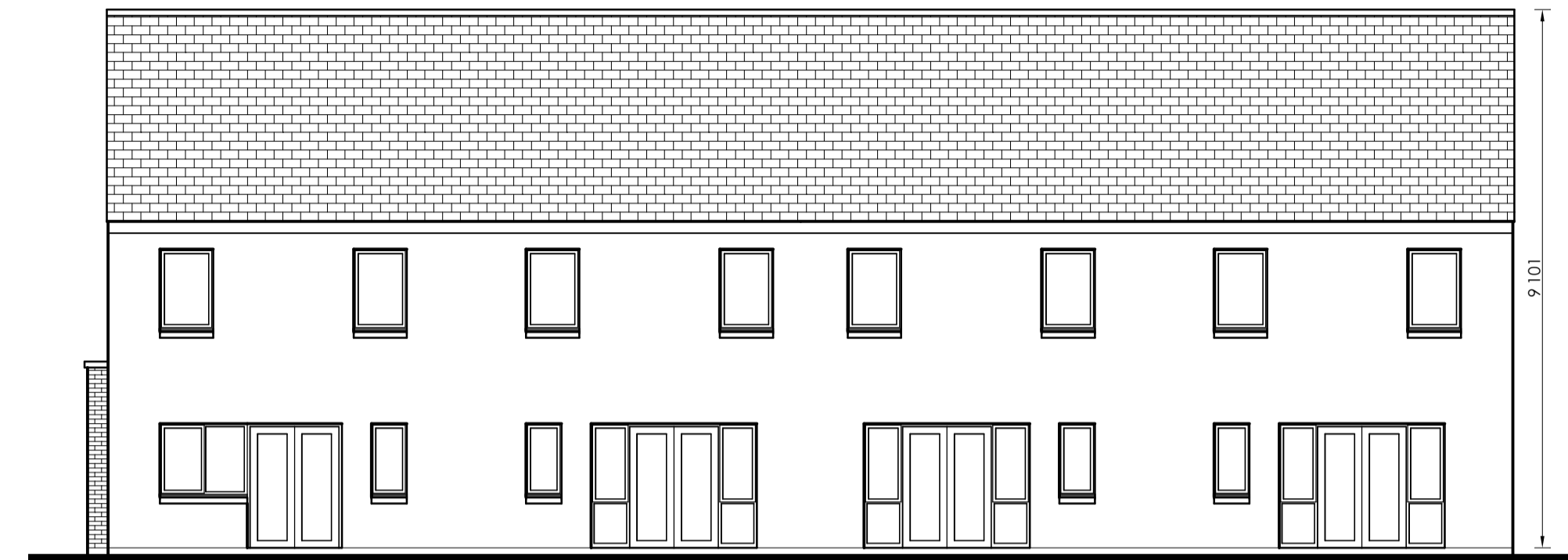
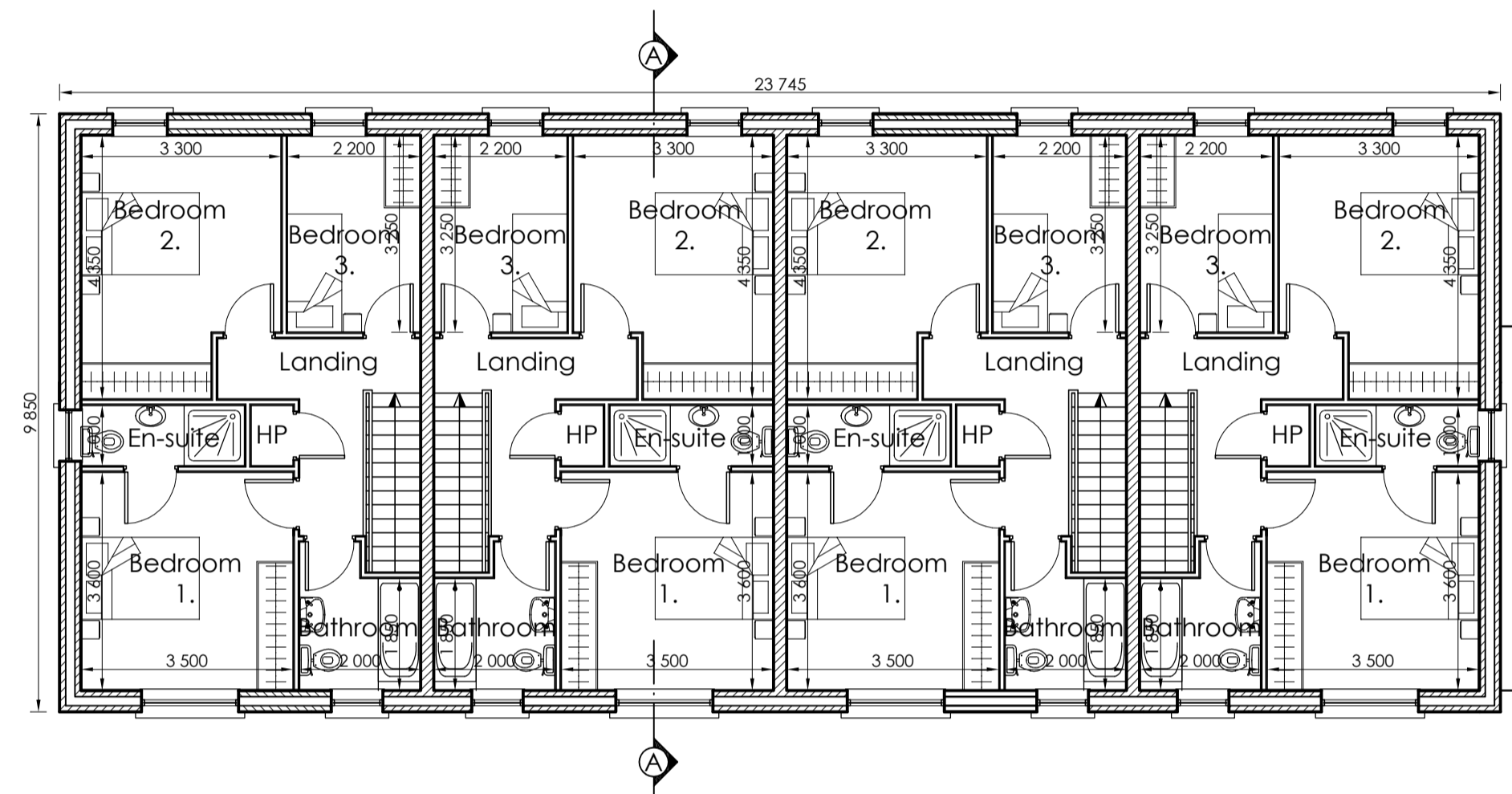


Front Elevation
Scale 1:100

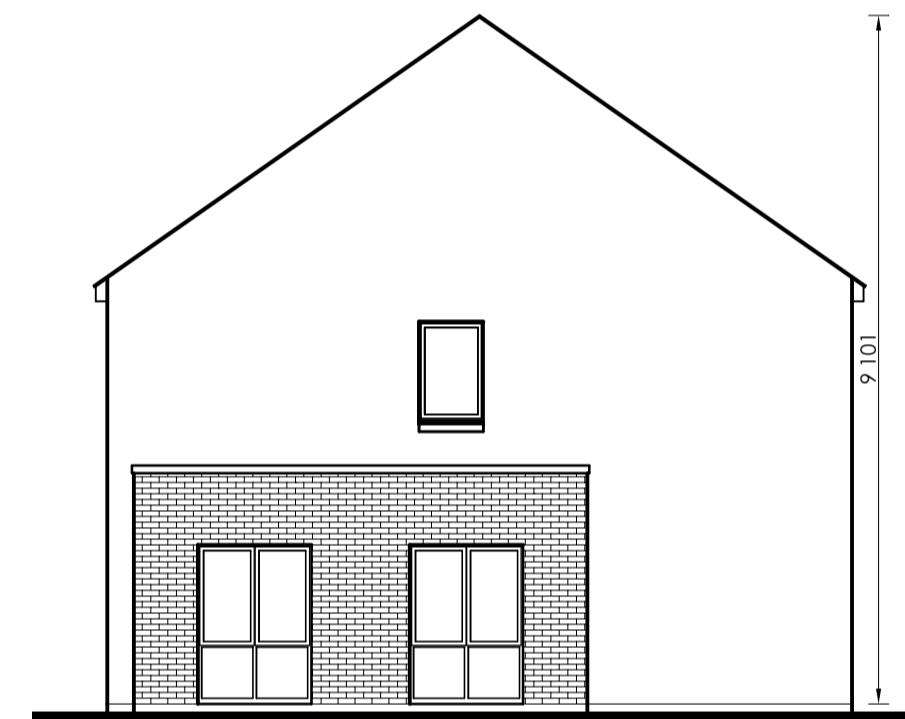
- Selected slate/tile to roof
- PVC fascia, soffit & guttering in selected colour
- Selected brick where indicated
- Double/triple glazed PVC windows in selected colour
- Selected plaster finish
- Windows stepped out in brickwork surround on dual-aspect end of terrace houses as appropriate
- Smooth plaster plinth



Rear Elevation
Scale 1:100

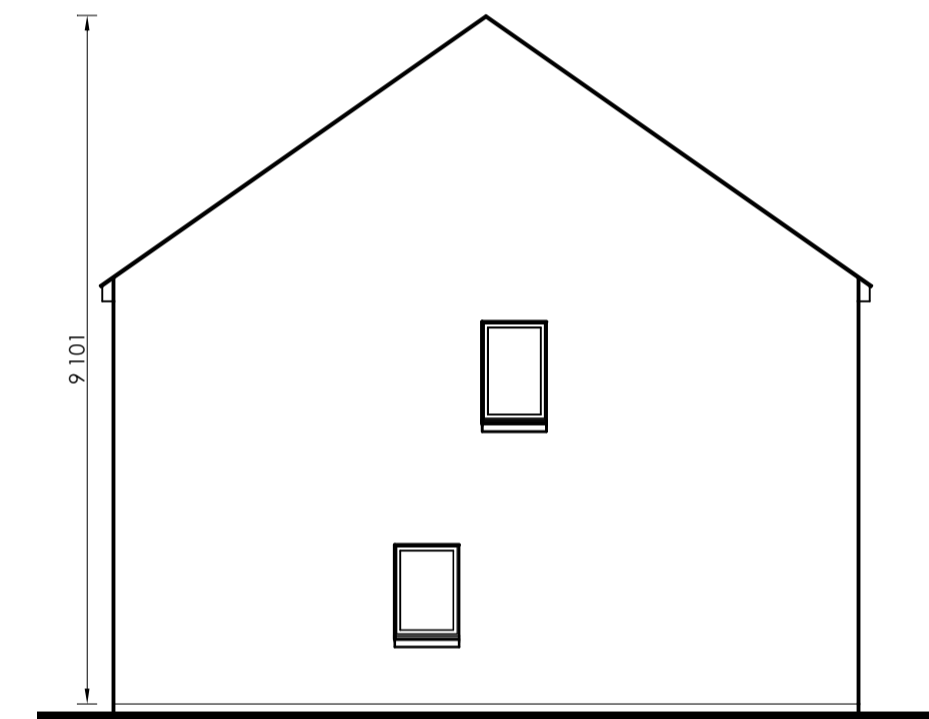


First Floor Plan
Scale 1:100

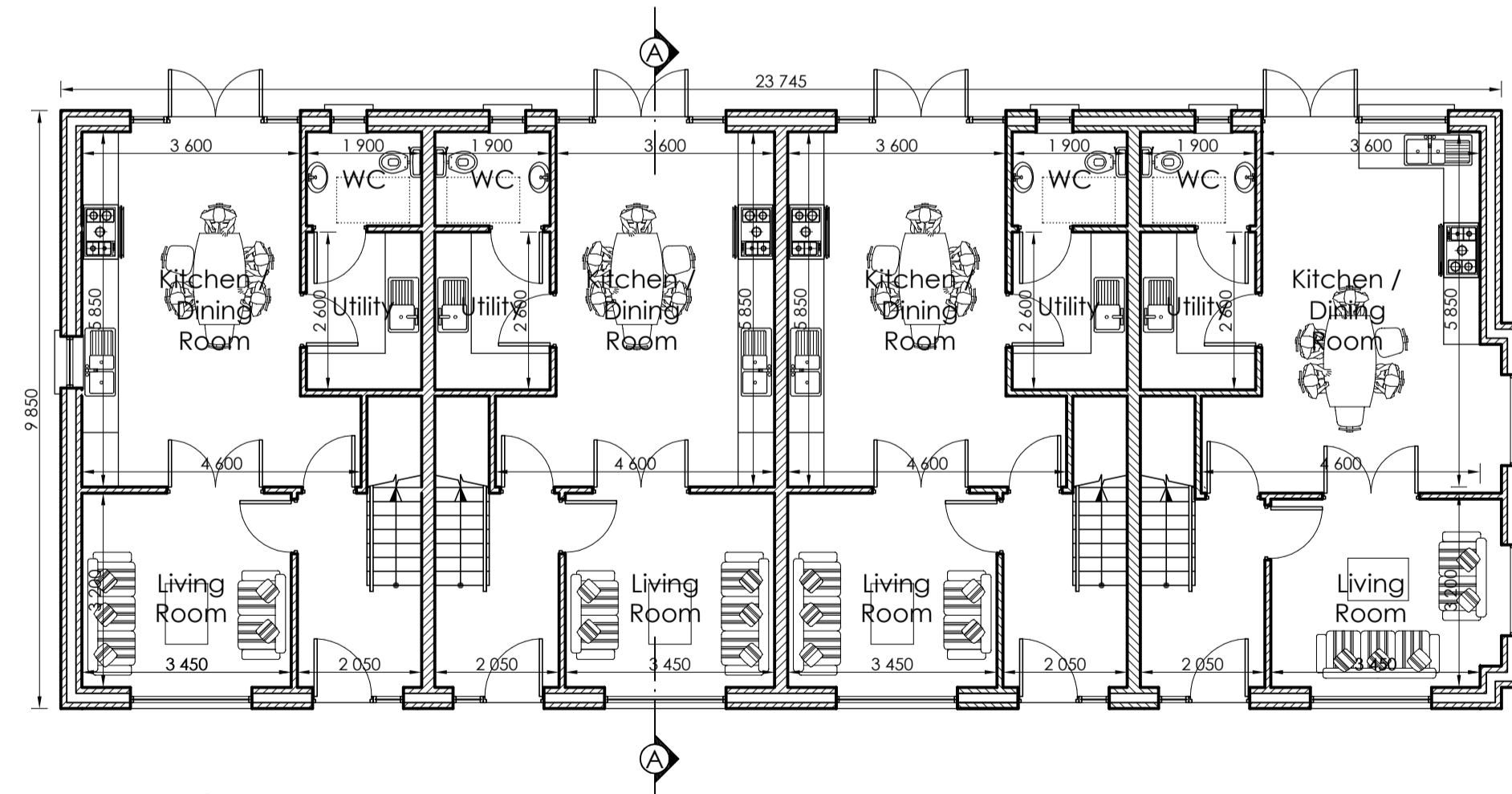


Side Elevation
Scale 1:100

- Selected slate/tile to roof
- PVC fascia, soffit & guttering in selected colour
- Selected brick where indicated
- Double/triple glazed PVC windows in selected colour
- Selected plaster finish
- Windows stepped out in brickwork surround on dual-aspect end of terrace houses as appropriate
- Smooth plaster plinth

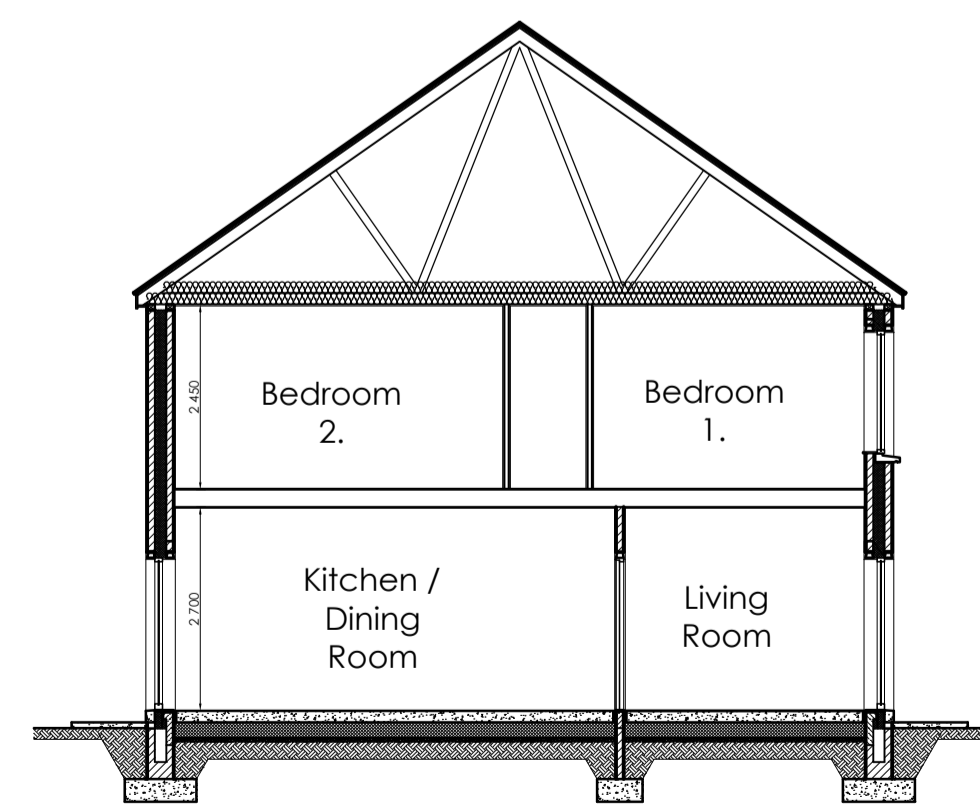


Side Elevation
Scale 1:100



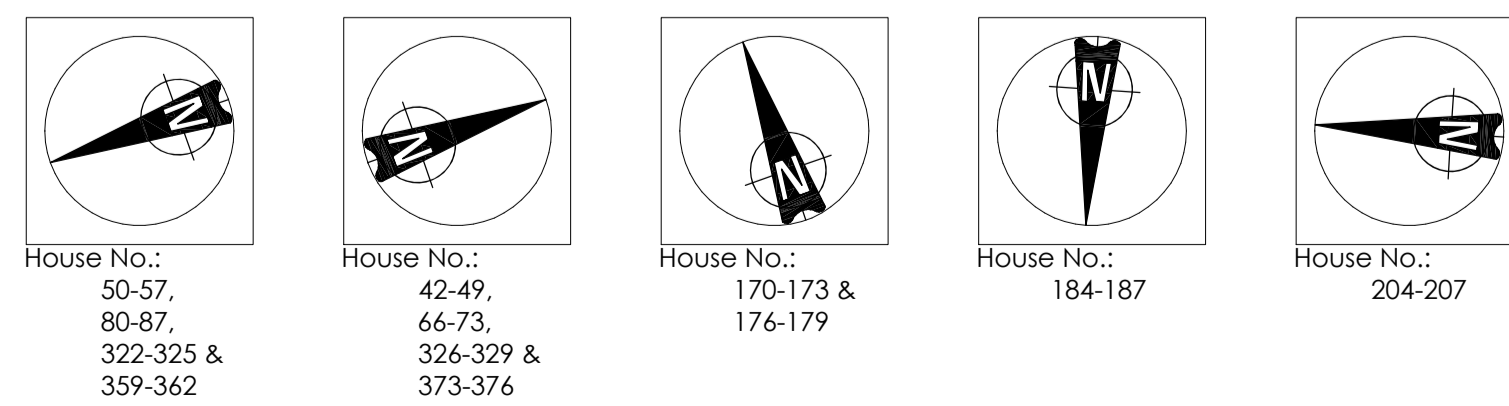
Ground Floor Plan
Scale 1:100

Windows stepped out in brickwork surround on dual-aspect end of terrace houses as appropriate



Section A-A
Scale 1:100

- Selected slates on 44 x 35 mm softwood battens on roofing felt on cut roof / prefabricated timber roof trusses
- PVC fascia, soffit and guttering
- Suspended timber first floor construction
- External wall construction: Insulated cavity external wall construction
- D.p.c. min. 150 mm above conc. path.
- Conc. foundation, depth, size and reinforcement to suit site conditions



57 no. 3 Bed Terrace of 4, Type 'A' [102.5m²]
7 no. 3 Bed Terrace of 4, Type 'A' [104.3 m²] – Dual Aspect

Revision	Description	Date
GLEESON MCSWEENEY		
Project: Proposed residential development at Ballykeeffe, Raheen, Limerick. For: DW Raheen Developments Ltd.		Stage: Planning
Title: 3 Bed Terrace of 4 Type A		
Scale: 1:100 @ A1	Date: December 2021	Drg No. 1704-10-116
Drawn: M.M.	Rev:	
99 O'Connell St., Limerick T 061 412277 E info@gleesonmcsweeney.ie		

ARCHITECTS